

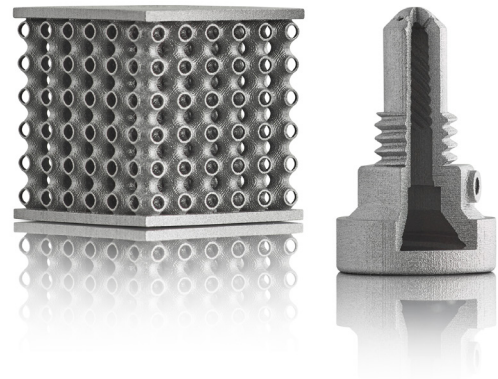
M247

NICKEL SUPERALLOY

M247 is a high-performance nickel-based superalloy with exceptional thermomechanical properties.

The material is closely related to IN625 and IN718 and displays remarkable inherent oxidation resistance, as well as outstanding strength and creep resistance at high temperatures.

It is particularly well-suited for use in demanding applications such as aerospace and gas turbine engines, combustion/exhaust systems, turbopump impellers, and other similar high-temperature environments.



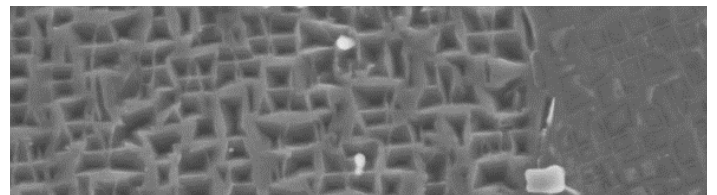
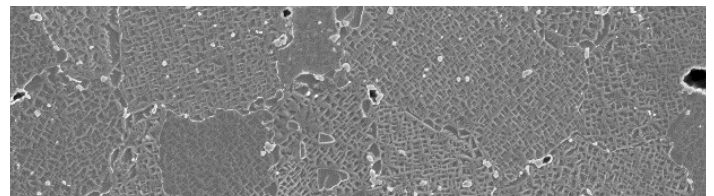
Composition	Weight%	Composition	Weight%
Aluminum	5.4	Molybdenum	0.66
Boron	0.012	Nickle	Balance
Carbon	0.13	Tantalum	3.0
Cobalt	9.9	Titanium	1.0
Chromium	8.3	Tungsten	9.8
Hafnium	1.3	Zirconium	0.05

Features & Benefits

- Very high tensile and creep rupture strength
- Excellent corrosion resistance
- Full density through Hot Isostatic Pressing, HIP
- Heat treatment improves microstructure

*Related compositions: MAR-M 247™, René 108, CM247LC

Physical Properties	As Sintered
Ultimate tensile strength [MPa]	1250
Yield strength [MPa]	750
Elongation [%]	20
Hardness [HRC]	35
Relative density [%]	98



These representative data were tested, measured, or calculated using standard methods and are subject to change without notice. Markforged makes no warranties of any kind, express or implied, including, but not limited to, the warranties of merchantability, fitness for a particular use, or warranty against patent infringement; and assumes no liability in connection with the use of this information. The data listed here should not be used to establish design, quality control, or specification limits, and are not intended to substitute for your own testing to determine suitability for your particular application. Nothing in this sheet is to be construed as a license to operate under or a recommendation to infringe upon any intellectual property right.