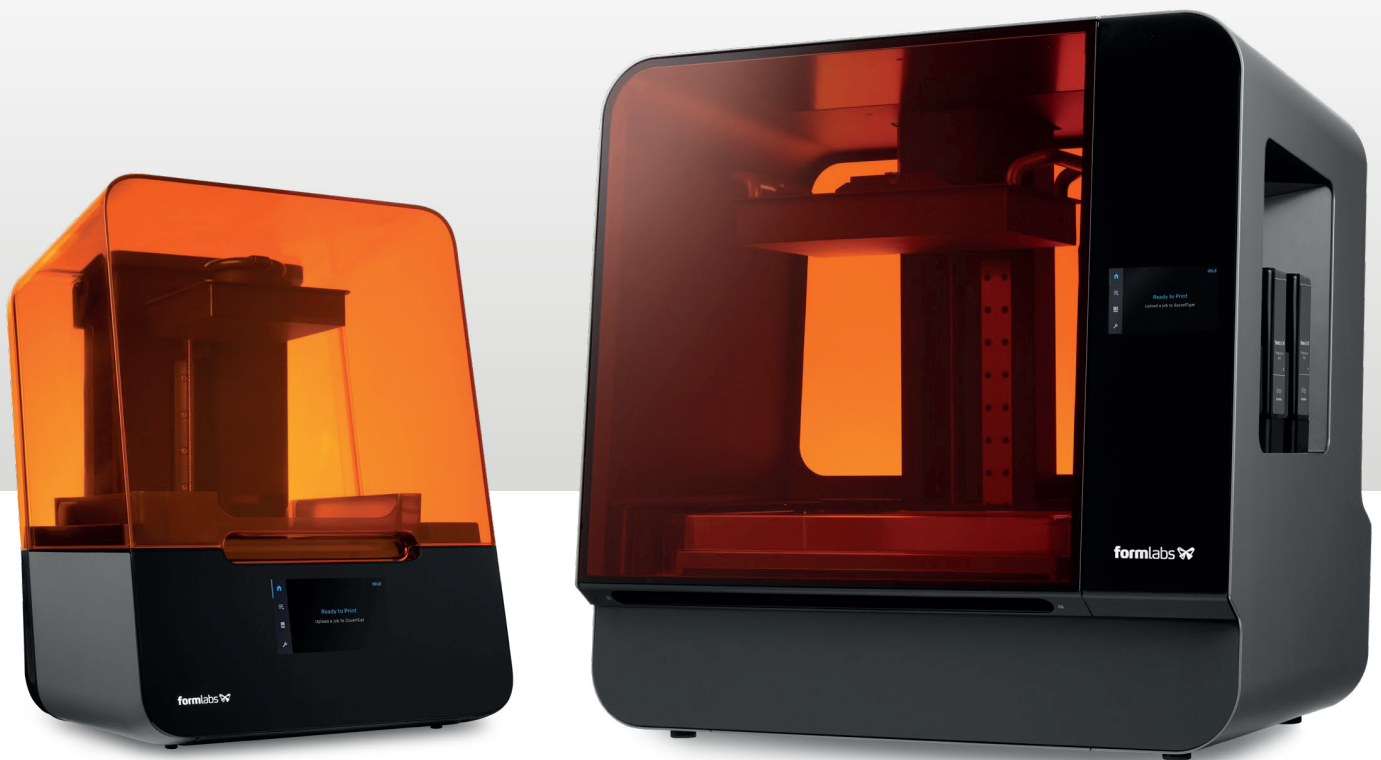


# The Next Generation of Industrial 3D Printing

Powered by Low Force Stereolithography™



**formlabs** 



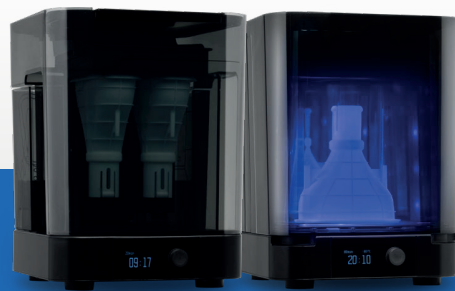
Print the Future

[www.3dz.it](http://www.3dz.it)  
[info@3dz.it](mailto:info@3dz.it)

# Form 3+

## Rapid, flawless prints, everytime

Produce functional, high-quality prototypes and end-use parts in record time with the Form 3+, an affordable, industrial-quality 3D printer that reliably delivers.



### TRULY RAPID PRODUCTION

Quickly go from design to finished part with the Form 3+ thanks to its streamlined, end-to-end workflow. The powerful, high-intensity laser and precisely tuned settings for every material enable fast printing.

### CONSISTENT, HIGH-QUALITY PARTS

The Form 3+ refines Formlabs' patented LFS technology to consistently deliver presentation-ready parts with crisp, accurate features and production-like surface finish.

### AUTOMATED WORKFLOW

This automated washing and post-curing system is designed to get the most out of your printed parts. Form Wash and Form Cure streamline the 3D printing process to consistently deliver high-quality results with less time and effort.

### MAXIMUM EFFICIENCY AND RELIABILITY

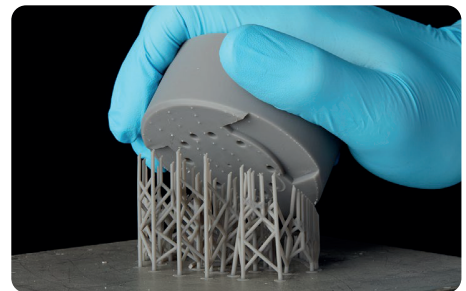
The Form 3+ is rich with features and sensors that improve ease of use and reliability so you can spend more time ideating and less time monitoring your printer.

## Improved Post-processing

New innovations eliminate the risk of damaging your parts with tools while allowing you to reduce labor and increase throughput.



Build Platform 2 and our patented **Quick Release Technology** releases parts from the print surface instantly.



**Enhanced light touch support** structures detach from the part in seconds.

# Form 3L

## Big Parts, Big Throughput

A large format 3D printer compact enough for the office and robust enough for the factory floor. Take control of large-scale part production, increase your throughput, and bring your biggest ideas to life with the Form 3L, a cost-effective large format 3D printer that doesn't compromise on the details.



### STOP OUTSOURCING LARGE-SCALE PRINTS

Work faster with a large format 3D printer that's versatile enough to bring large scale fabrication in-house.

### SCALE UP YOUR IN-HOUSE PRODUCTION

With its large build volume and high-performance materials, the Form 3L allows you to produce small batches of market-ready, high-quality parts.

### PERFECTIONISM THAT SCALES

Two precision Light Processing Units inside the printer achieve consistent accuracy and detail across the entire build platform.

### POST-PROCESSING, SIMPLIFIED

Streamline your workflow and consistently produce clean, high-quality, accurate parts with our automated, large format post-processing machines, Form Wash L and Form Cure L.

## Powered by Low Force Stereolithography (LFS)<sup>™</sup>

LFS technology uses linear illumination and a flexible tank to turn liquid resin into flawless prints. This advanced form of stereolithography drastically reduces peel forces to provide groundbreaking print quality and printer reliability.

### Tech Specs

#### Form 3+

#### Form 3L

TECHNOLOGY	Low Force Stereolithography (LFS) <sup>™</sup>	
BUILD VOLUME (W x D x H)	14.5 × 14.5 × 18.5 cm 5.7 × 5.7 × 7.3 in	33.5 × 20 × 30 cm 13.2 × 7.9 × 11.8 in
LAYER THICKNESS	25 - 300 microns (0.001 - 0.012 in)	
LASER POWER	1x 250 mW laser	2x 250 mW laser
XY RESOLUTION	25 microns (0.001 in)	
WEIGHT	17.5 kg   38.5 lbs	54.4 kg   120 lb
PRINTER DIMENSIONS	40.5 × 37.5 × 53 cm 15.9 × 14.8 × 20.9 in	77 × 52 × 74 cm 30.3 × 20.5 × 29.1 in
WARRANTY AND SERVICE	One Year Warranty included. Extended Warranty, Pro Service, and Enterprise Plan available.	
SOFTWARE COMPATIBILITY	Windows 7 and up // Mac OSX 10.6.8 and up	
FILE TYPE	STL or OBJ	

### A complete ecosystem

Get more done and work more efficiently with an end-to-end 3D printing workflow. From printing to post-processing, each step of the process was designed with efficiency in mind.



#### SOFTWARE

Prepare your files and your print queue in PreForm and manage printers and teams through your online Dashboard.



#### 30+ MATERIALS

Bring any project to life, from prototypes to high-performance end-use parts. Seamlessly switch between a library of over 30 functional materials with a cross-compatible cartridge system.



#### PREMIUM SUPPORT

Our Formlabs support team is staffed with 3D printing experts who will help you get the most out of your printer so you can stay focused on growing your business.



Print the Future

[www.3dz.it](http://www.3dz.it)  
[info@3dz.it](mailto:info@3dz.it)